



Community:
Smoking Drive, Robeson, PA 19551
Builders: [Klassen Builders](#)
School District: Conrad Weiser
Listing Agent: Kenneth Carper
New Home Sales Coordinator:
Sheila Liffey 717-560-5500
Sheila@Gatewayrealtyinc.com
On-Site Agent:

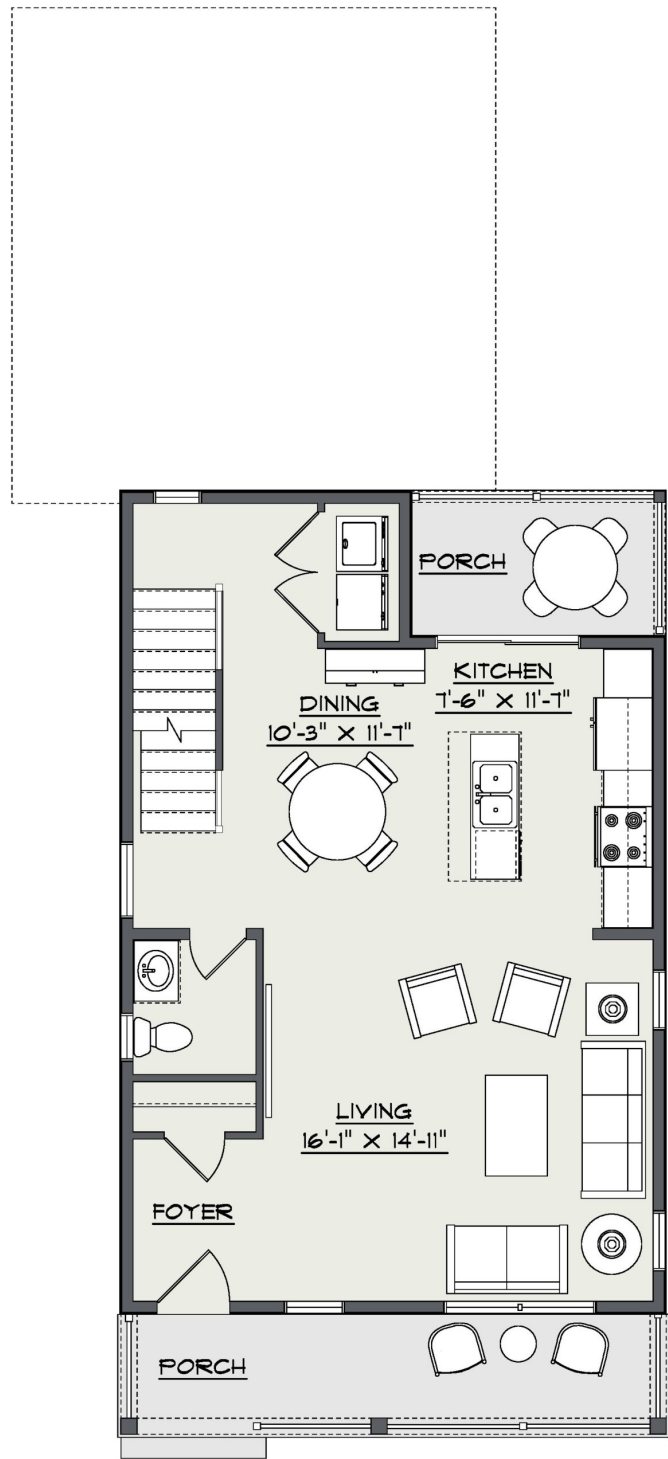
Lot

Lot Availability:
Lot Size:
Lot Price: \$264,900

Home Type:Single
Bedrooms:3
Bathrooms:2.5
Garage:2-Car Garage

The Thornbury's stone and siding façade and front porch conveys a classic traditional style. Inside, the kitchen, dining and great room are wide open, creating a feeling of spaciousness and flexibility. A covered rear porch extends living and entertaining to the outdoors. Down stairs features an expandable walkout basement. Upstairs are a generous primary suite and two large bedrooms, one could be an in-home office or fun hobby space. Check out this 1,462 square foot home.

First Floor Plan



Second Floor Plan

