



gatewayrealtyinc.com
717-560-5500



Lot 30

Lot Availability: Available

Lot Size:

Lot Price: \$257,900

Home Type: Semi

Bedrooms: 3

Bathrooms: 2.5

Garage: 1-Car Garage

The Patterson design offers a vast array of amenities. The columned front porch and stone accenting dress up the exterior of this semi-detached home; well-planned living spaces highlight the interior. The bright living room opens to the dining area which continues onto the rear deck. The sunny step-saver kitchen offers plenty of space for two people to share in the food prep while visiting with friends around the large breakfast bar. The laundry and powder room find privacy behind the kitchen. On the second floor, the master bedroom features a box-bay window, a private bath with dual sinks, a five-foot shower and a huge walk-in closet. One of the two additional bedrooms sports a walk-in closet and both share a hall bath. Adding to all this is a full basement.

Community:

Furnace Village
Smoking Drive, Robeson, PA
19551

Builders: [Klassen Builders](#)

School District: Conrad Weiser

Listing Agent: Kenneth Carper

New Home Sales Coordinator:

Sheila Liffey 717-560-5500

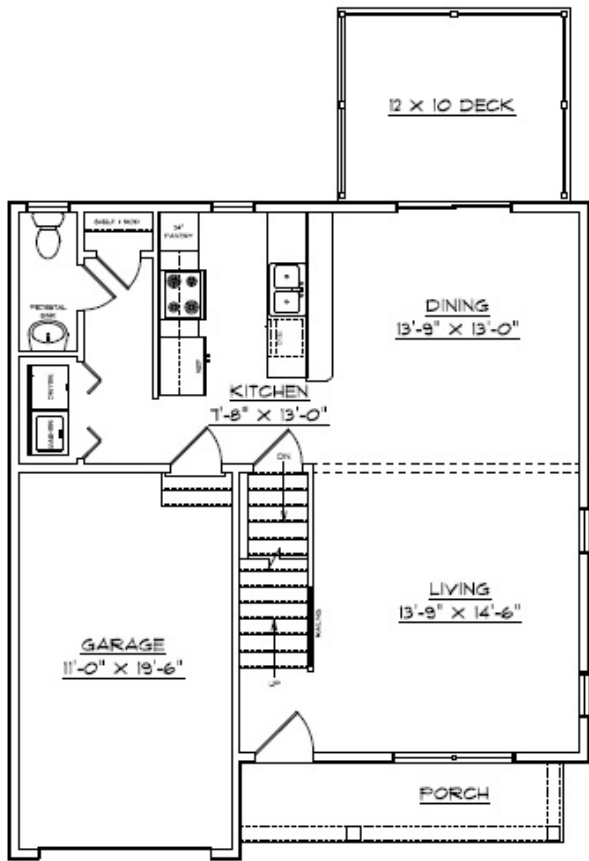
Sheila@Gatewayrealtyinc.com

On-Site Agent: Evenings and
Weekends Contact: Kelly Corbin

717-201-4868

Kelly@Gatewayrealtyinc.com

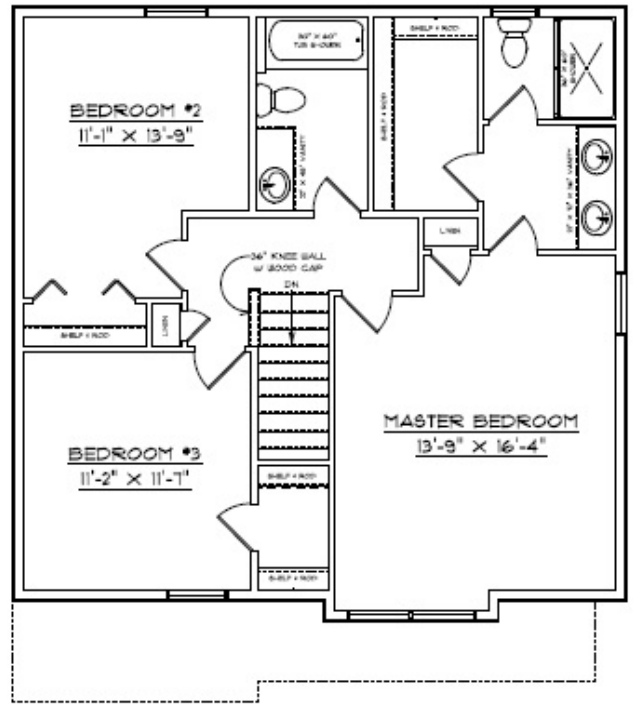
First Floor



FIRST FLOOR PLAN
SCALE: 3/8" = 1'-0"

LIVING AREA	
FIRST FLOOR:	456 SQ. FT.
SECOND FLOOR:	879 SQ. FT.
TOTAL:	871 SQ. FT.

Second Floor



SECOND FLOOR PLAN
SCALE: 3/8" = 1'-0"