



gatewayrealtyinc.com
717-560-5500



Lot 16

Lot Availability: Sold
Lot Size:
Lot Price: \$257,900

Home Type: Semi
Bedrooms: 3
Bathrooms: 2.5
Garage: 1-Car Garage

The Ferguson design offers an first floor finished space, which can be a hobby room, office or playroom. Upon walking up to the stairs, you enter a cheery open floor plan of dining, kitchen and living room. Range, microwave and dishwasher are included. Kitchen island provides a place for casual meals, pantry, & study on the main floor. Primary suite with walk-in closet and private bath and 2 additional bedrooms & hall bath on next level.

Community:

Furnace Village
Smoking Drive, Robeson, PA
19551

Builders: [Klassen Builders](#)

School District: Conrad Weiser

Listing Agent: Kenneth Carper

New Home Sales Coordinator:

Sheila Liffey 717-560-5500

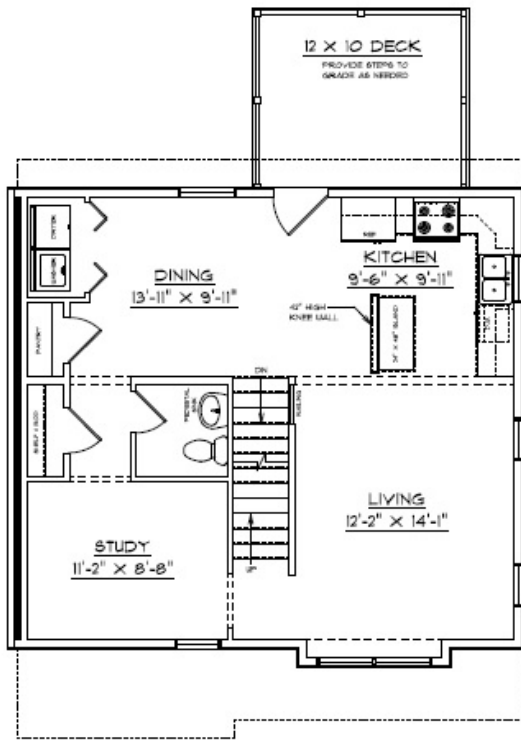
Sheila@Gatewayrealtyinc.com

On-Site Agent: Evenings and
Weekends Contact: Kelly Corbin

717-201-4868

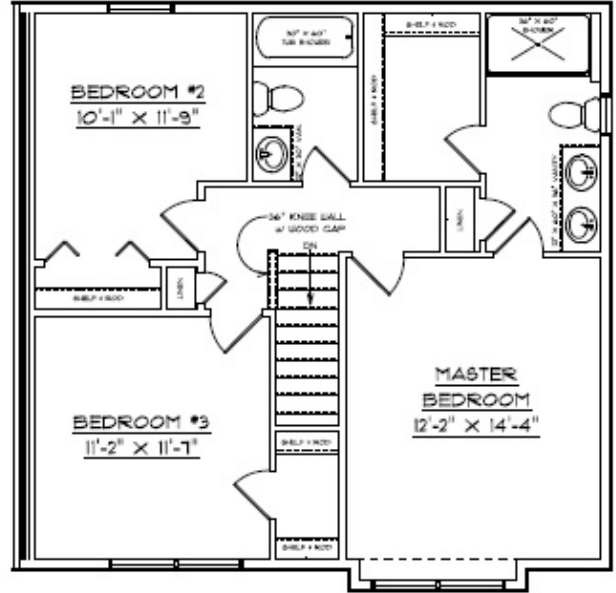
Kelly@Gatewayrealtyinc.com

First Floor



LIVING AREA	
BASEMENT:	80 SQ. FT.
FIRST FLOOR:	133 SQ. FT.
SECOND FLOOR:	164 SQ. FT.
TOTAL:	377 SQ. FT.

FIRST FLOOR PLAN
SCALE: 3/8" = 1'-0"



SECOND FLOOR PLAN
SCALE: 3/8" = 1'-0"