



Lot 32

Lot Availability: Sold
Lot Size: .07
Lot Price:

Home Type: Semi
Bedrooms: 3
Bathrooms: 2.5
Garage: 1-Car Garage

*Coming Soon - August 2023. The eye-catching details of this craftsman include a banistered front porch, cobble stone with contrasting horizontal and board & batten siding. This floor plan is capable of one floor living with a primary suite featuring a double bowl vanity, linen, and walk-in closets. Both the laundry and powder room are very accessible but hidden. A bright kitchen has ample counter space, a large pantry and breakfast bar. A large dining area opens onto a 12 X 10 foot patio. Two more bedrooms are on the second floor sharing a hall bath with linen closet.

Community:

Smoking Drive, Robeson, PA 19551

Builders: [Jeffrey Wenger](#)

[Builder](#)

School District: Conrad Weiser

Listing Agent: Kenneth Carper

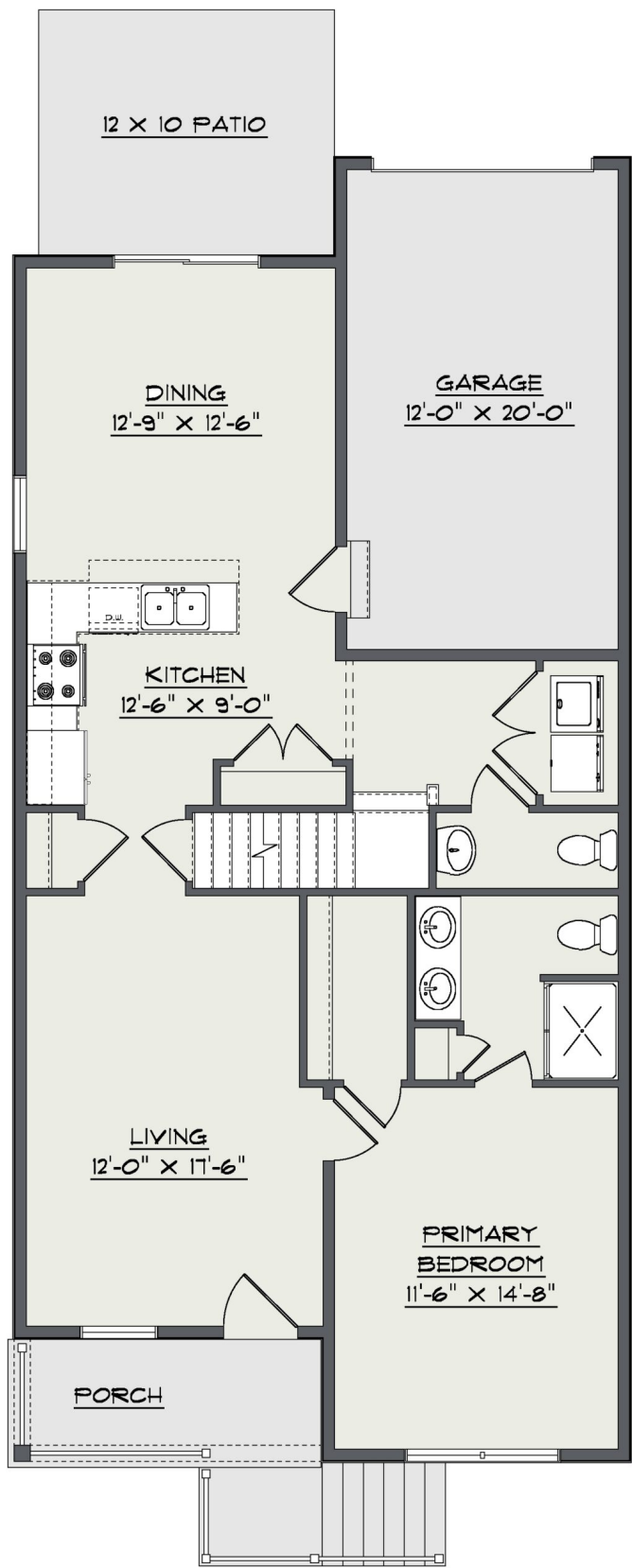
New Home Sales Coordinator:

Sheila Liffey 717-560-5500

Sheila@Gatewayrealtyinc.com

On-Site Agent:

First Floor



Second Floor

