

## Lot 69

Lot Availability: Sold  
Lot Size: .09  
Lot Price: \$370,500

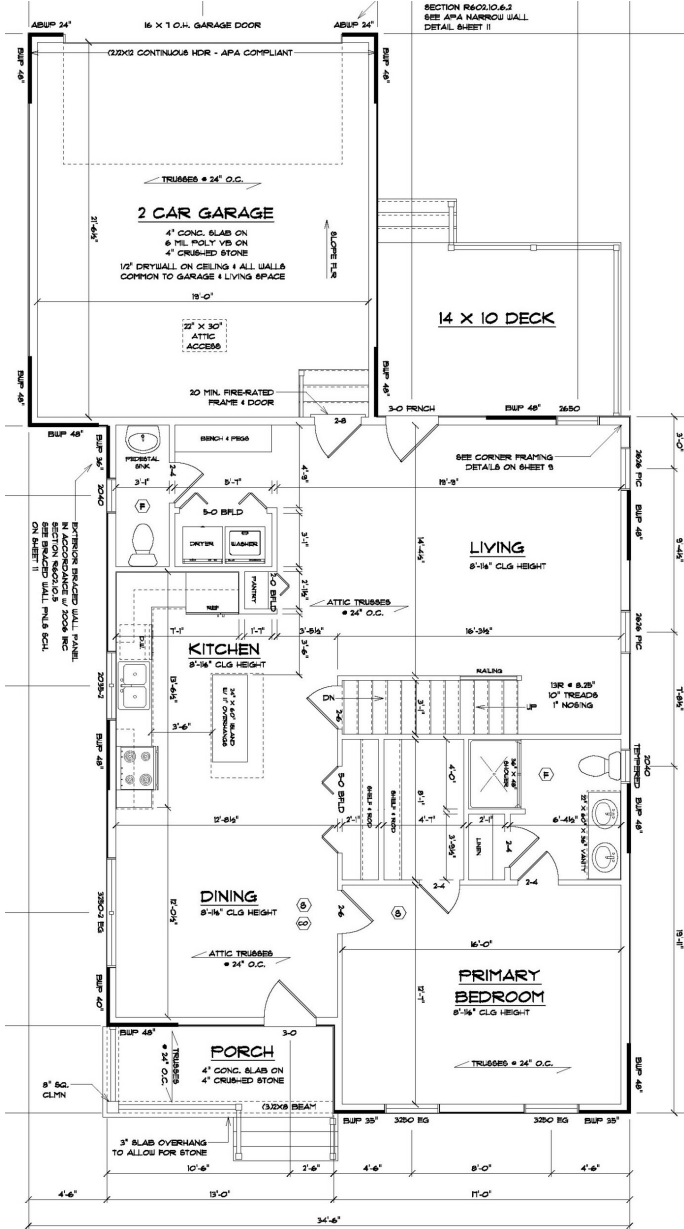
Home Type: Single  
Bedrooms: 3  
Bathrooms: 2.5  
Garage: 2-Car Garage

Welcome home to a quaint country cottage that offers lots of living spaces. The plan has three bedrooms, two- and one-half bathrooms and a large basement. The kitchen features a pantry, an island with overhang for seating, double bowl sink and a convenient door for easy access to the 2 car garage. The kitchen is flanked on one side by a spacious bright living room that opens onto a 14 X 10 patio, and on the other, by the bright dining area with window. Continue on the main floor to the primary suite with a wide bathroom, double bowl vanity and linen closet. The main floor concludes with a powder room and convenient laundry closet with washer and dryer hook-up. Upstairs you'll find a full bath and two spacious bedrooms. \*This home is in the early construction phase with a completion estimate of September 20, 2024.

**Community:**  
Wabash Landing  
421 Wabash Road, Ephrata, PA  
17522

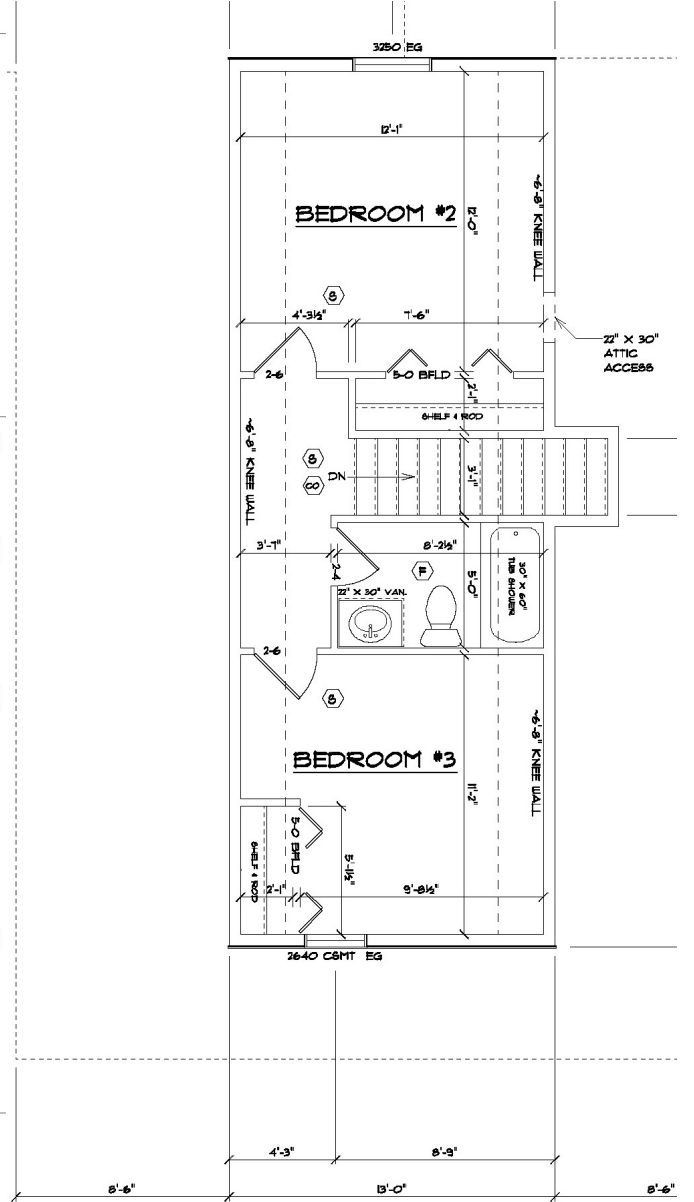
**Builders:** [Klassen Builders](#)  
**School District:** Cocalico  
**Listing Agent:** Kenneth L. Carper  
**New Home Sales Coordinator:** Sheila Liffey 717-735-3521, [Sheila@Gatewayrealtyinc.com](mailto:Sheila@Gatewayrealtyinc.com)  
**On-Site Agent:** Gateway Realty Inc.

First Floor



FIRST FLOOR PLAN

Second Floor



SECOND FLOOR PLAN