



gatewayrealtyinc.com
717-560-5500



Community:

Wabash Landing
421 Wabash Road, Ephrata, PA
17522

Builders: [Earl King Construction](#), [Jeffrey Wenger Builder](#), [Klassen Builders](#), [Zimmerman Home Builders](#)

School District: Cocalico

Listing Agent: Kenneth L.
Carper

New Home Sales Coordinator:
Sheila Liffey 717-735-3521,
Sheila@Gatewayrealtyinc.com

On-Site Agent: Gateway Realty
Inc.

Lot 37 – 34 Pacific Blvd

Price:\$358,500

Home Type:Single

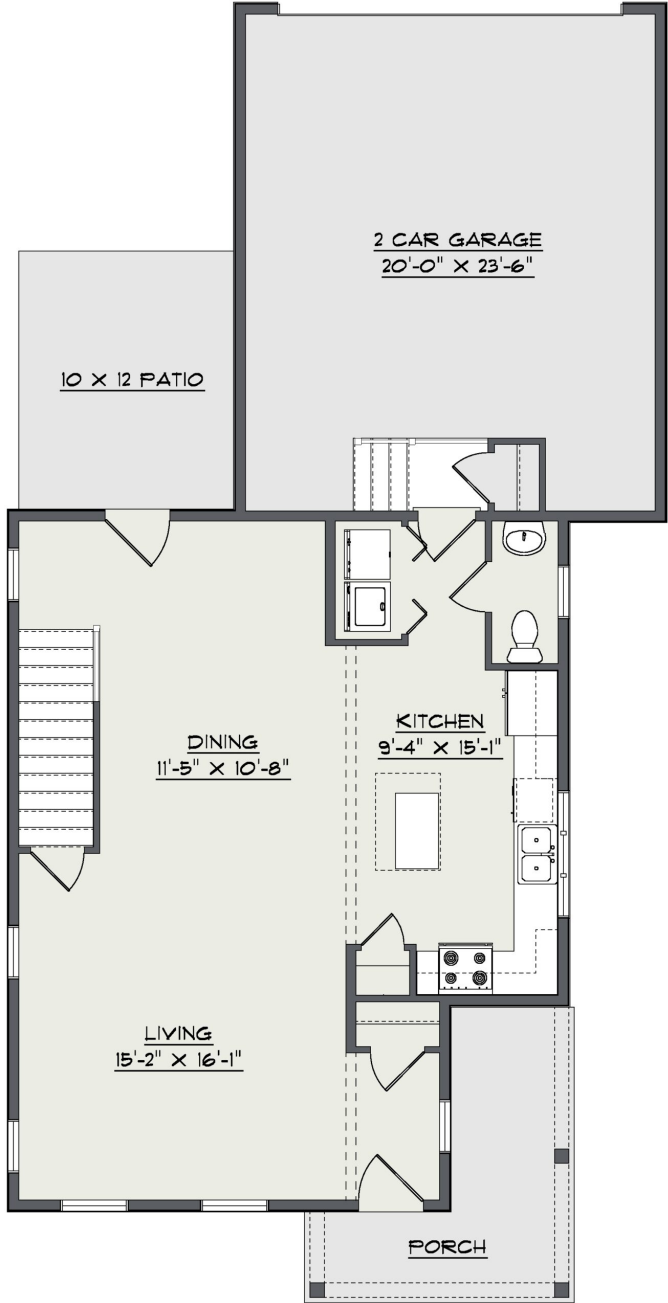
Bedrooms:3

Bathrooms:2.5

Garage:2-Car Garage

A wrap around porch adds charm and grace to this beauty with the gable accented with board-an-batten. The open floor plan is great for entertaining or just staying connected as you unwind. The large bright kitchen has ample space for many helping hands with pantry and laundry only a step away. The primary suite which occupies the rear of the second-floor features a double bowl vanity, linen, and walk-in closet. Two more large bedrooms share a full bath. Check out the floorplan of this 1,649 square foot property in the included mls documents. *This home is under construction with a completion estimate of mid-March, 2024.

First Floor



Second Floor

