



gatewayrealtyinc.com
717-560-5500



Lot 40 – 28 Pacific Blvd

Price:\$359,500

Home Type:Single

Bedrooms:3

Bathrooms:2.5

Garage:2-Car Garage

Welcome home to a quaint country cottage that offers lots of living spaces. The plan has three bedrooms, two- and one-half bathrooms and a large basement. The kitchen which opens onto a 12 X 10 patio features a pantry, island with double bowl sink and a raised breakfast bar all flanked by a spacious bright living room and dining area. Upstairs the primary suite has a wide bath with double bowl vanity and linen closet. Additionally, the hall borders a washer and dryer hook-up, a full bath and two more bedrooms. The deep two car garage exits onto the rear alley. *This home is under construction with a completion estimate of mid-to late-May, 2024.

Community:

Wabash Landing
421 Wabash Road, Ephrata, PA
17522

Builders: [Earl King Construction](#), [Jeffrey Wenger Builder](#), [Klassen Builders](#), [Zimmerman Home Builders](#)

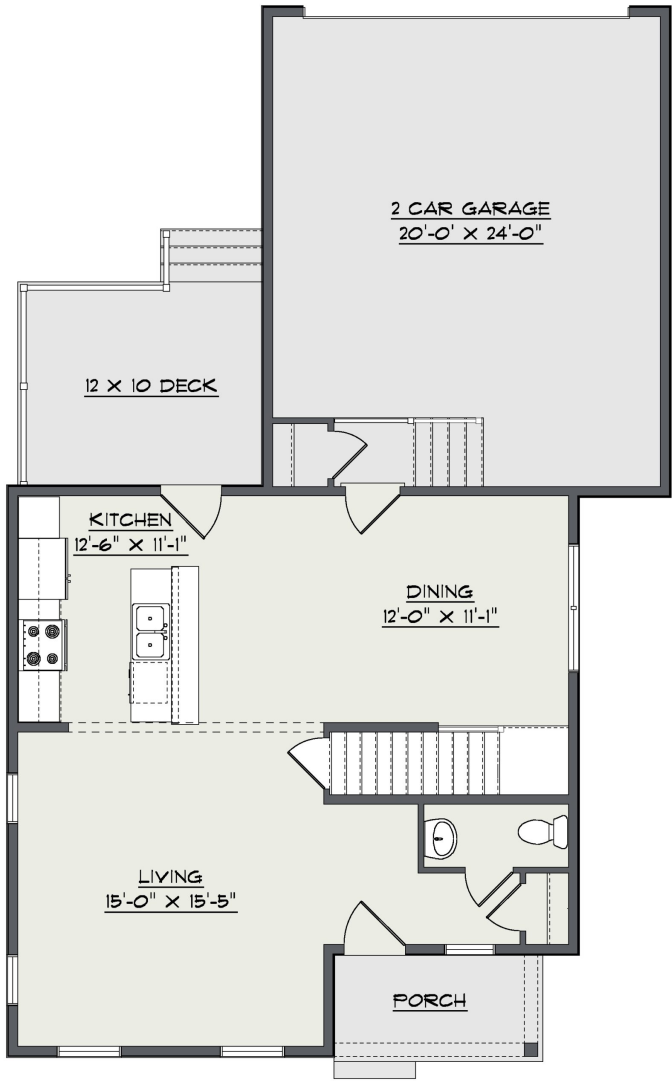
School District: Cocalico

Listing Agent: Kenneth L.
Carper

New Home Sales Coordinator:
Sheila Liffey 717-735-3521,
Sheila@Gatewayrealtyinc.com

On-Site Agent: Gateway Realty
Inc.

First Floor



Second Floor

