



gatewayrealtyinc.com
717-560-5500



Lot 59 – 457 Smokering Drive

Price:\$283,500

Home Type:Semi

Bedrooms:3

Bathrooms:2.5

Garage:1-Car Garage

The Patterson Model: Stone accent front semi-detached. You enter a cheery open floor plan of dining, kitchen and living room. Over the range microwave and diswasher are included. Dining area provides a place for casual meals, pantry, laundry closet and powder room complete the main floor. Second floor Primary Suite with walk-in closet and attached private bath with 2 additional bedrooms and shared hall full bath. Downstairs has unfinished basement for extra storage or future expansion.

Community:

Furnace Village
Smokering Drive, Robeson, PA 19551

Builders: [Klassen Builders](#)

School District: Conrad Weiser

Listing Agent: Kenneth Carper

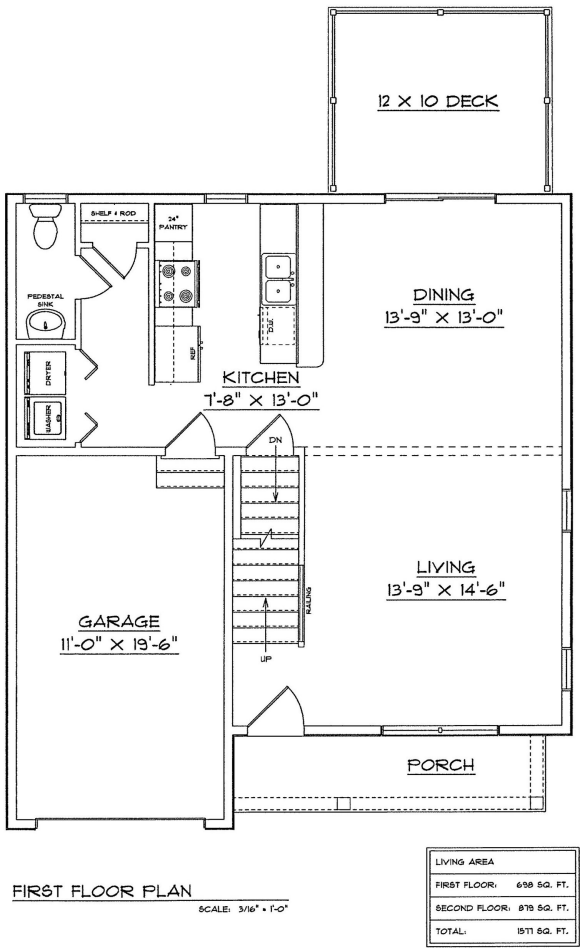
New Home Sales Coordinator:

Sheila Liffey 717-560-5500

Sheila@Gatewayrealtyinc.com

On-Site Agent:

First Floor



Second Floor

