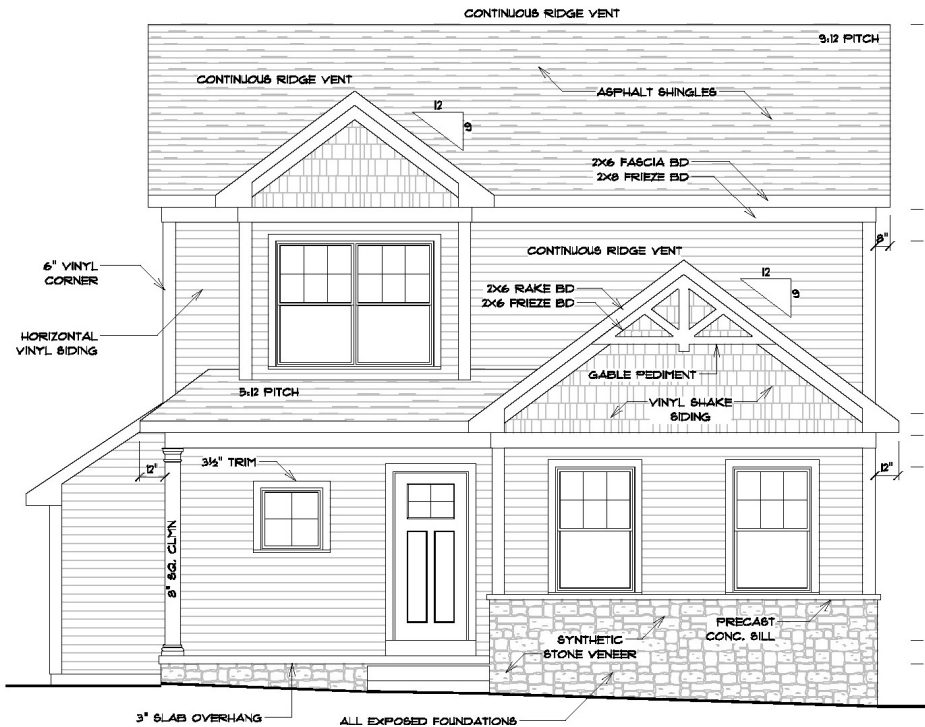




gatewayrealtyinc.com
717-560-5500



Community:

-- Wabash Landing
-- 421 Wabash Road, Ephrata, PA
-- 17522

Builders: [Jeffrey Wenger](#)
[Builder](#), [Klassen Builders](#),
[Zimmerman Home Builders](#)

-- **School District:** Cocalico

-- **Listing Agent:** Kenneth L.
Carper

New Home Sales Coordinator:

Ken Carper,
ken@gatewayrealtyinc.com

On-Site Agent: Gateway Realty
Inc.

Lot 72 – 35 Pacific Blvd

Price:\$374,000

Home Type:Single

Bedrooms:3

Bathrooms:2.5

Garage:2-Car Garage

This charming two-story craftsman showcases a first floor primary suite with large bathroom having a double bowl vanity, linen closet and shower. The bright living and dining areas lead to the kitchen and breakfast bar that opens onto a 12 X 10 deck. Upstairs are two bedrooms sharing a hall bath and linen closet. Downstairs features a basement which will be insulated and ready to be finished by the homeowner at a later date. * This property is scheduled to be finished by November 8, 2024.

[illegible][illegible]

SCALE: 3/16" = 1'-0"