

Lot 69 – 29 Pacific Blvd

Price: \$370,500

Home Type: Single

Bedrooms: 3

Bathrooms: 2.5

Garage: 2-Car Garage

Welcome home to a quaint country cottage that offers lots of living spaces. The plan has three bedrooms, two- and one-half bathrooms and a large basement. The kitchen features a pantry, an island with overhang for seating, double bowl sink and a convenient door for easy access to the 2 car garage. The kitchen is flanked on one side by a spacious bright living room that opens onto a 14 X 10 patio, and on the other, by the bright dining area with window. Continue on the main floor to the primary suite with a wide bathroom, double bowl vanity and linen closet. The main floor concludes with a powder room and convenient laundry closet with washer and dryer hook-up. Upstairs you'll find a full bath and two spacious bedrooms. *This home is in the early construction phase with a completion estimate of September 20, 2024.

Community:

Wabash Landing
421 Wabash Road, Ephrata, PA
17522

Builders: [Earl King](#)

[Construction](#), [Jeffrey Wenger](#)
[Builder](#), [Klassen Builders](#),
[Zimmerman Home Builders](#)

School District: Cocalico

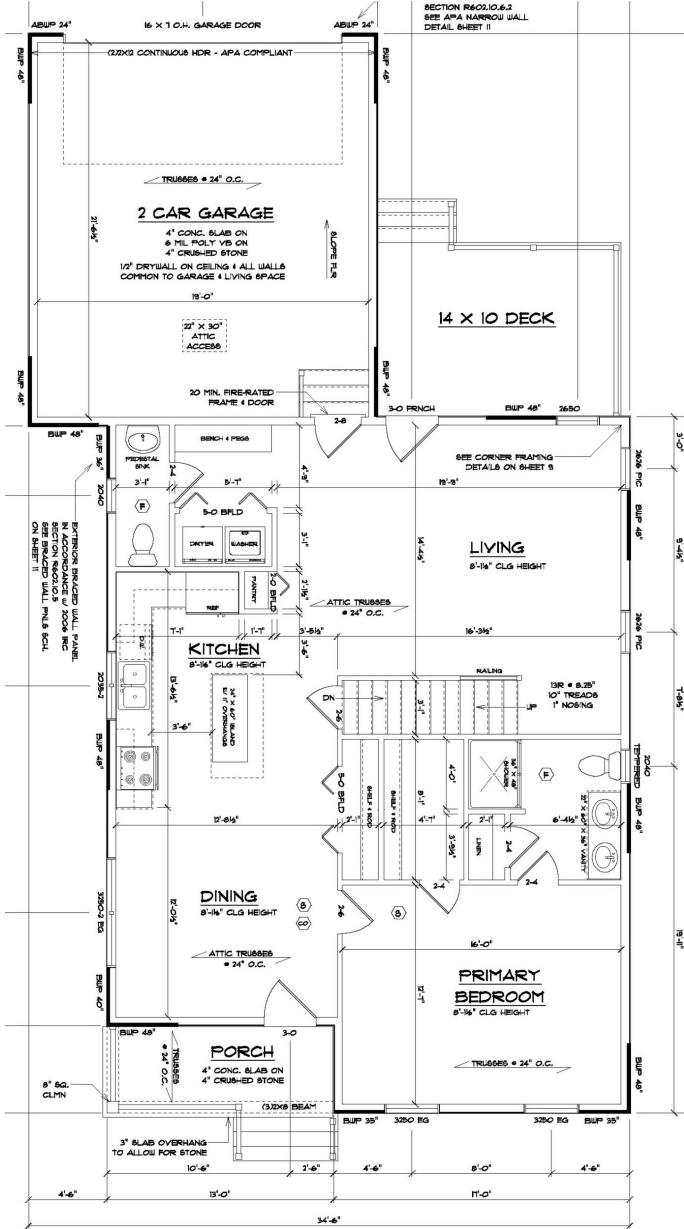
Listing Agent: Kenneth L.
Carper

New Home Sales Coordinator:

Sheila Liffey 717-735-3521,
Sheila@Gatewayrealtyinc.com

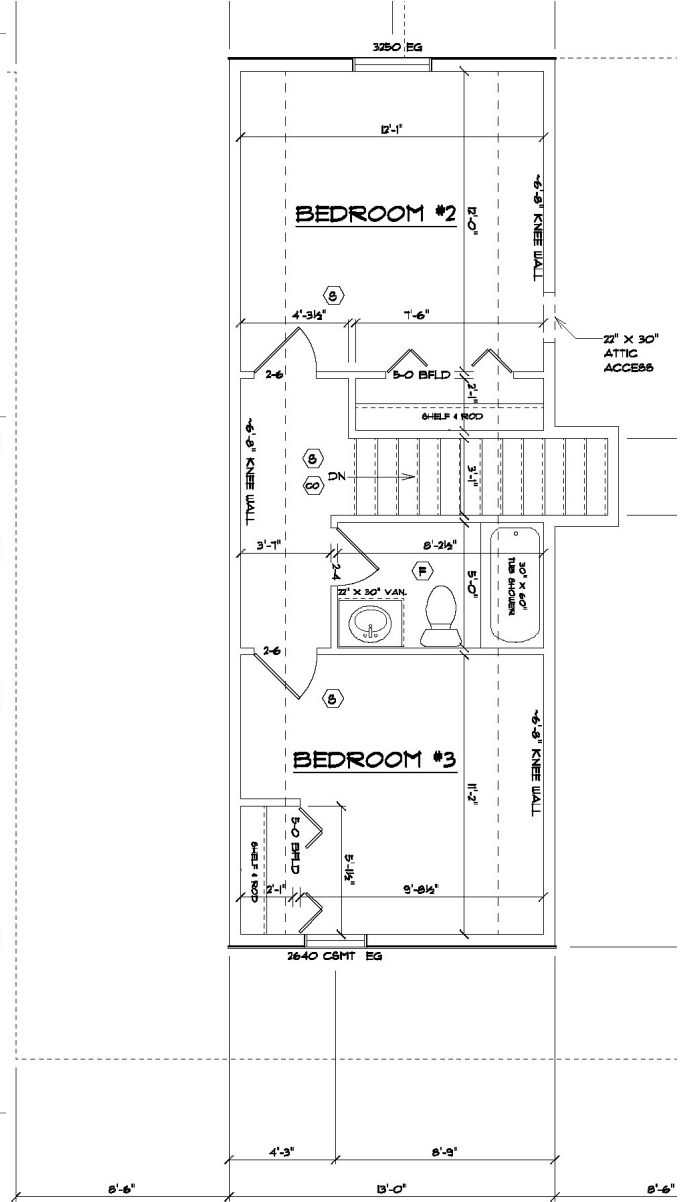
On-Site Agent: Gateway Realty
Inc.

First Floor



FIRST FLOOR PLAN

Second Floor



SECOND FLOOR PLAN